



RUTUGANDH

EXCLUSIVE ROW BUNGALOWS  
AT TAPOLA

HEAVENLY RETREATS  
AWAIT



# A GATEWAY TO PEACEFUL PARADISE

---

Experience the enchanting wake-up call at Tapola, where you have the delightful option to greet your mornings with the captivating view of our serene water features in The Waterfront. Nestled strategically throughout the neighborhood, The Waterfront promises to elevate the tranquility of Rutugandh's ambiance, leaving you truly mesmerized.





# A COMMUNAL HAVEN AMIDST GREEN SERENITY

---

As families choose to embrace The Spine, they immerse themselves in a world of boundless lush greenery.

This picturesque landscape offers not only beautiful green spaces but also dedicate bike and jogging lanes, creating the perfect setting for recreational activities and fostering a warm and welcoming communal ambiance. At Rutugandh, every moment becomes a celebration of nature's embrace.



# A SYMPHONY OF EVERGREEN TRANQUILLITY

---

Envision a seamless stretch of evergreen parks adorning the horizon... Welcome to The Green Oasis at Rutugandh.

Embracing the essence of picturesque nature, The Green Oasis presents an array of idyllic sanctuaries, inviting you to relish early morning jogs, leisurely afternoon strolls, tranquil yoga sessions, heartwarming catch-ups with loved ones, and joyful outdoor adventures for the little ones.



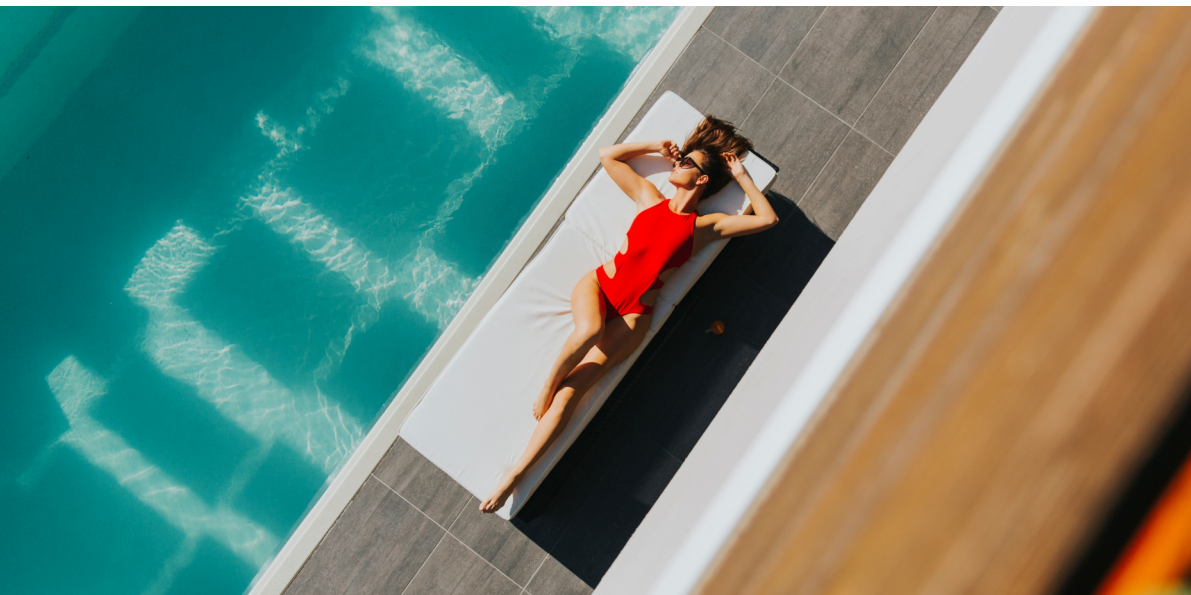


# THE HEART OF HARMONY

---

Welcome to RutuGandh Tapola, where serenity meets sophistication across a vast 6-acre landscape. Discover our exquisite 4 & 3 BHK Row Villas nestled within a secure gated community.

At RutuGandh Tapola, every villa is a testament to modern design, blending seamlessly with the surrounding natural beauty. Indulge in a lifestyle that mirrors the opulence of a resort, immersing yourself in unparalleled comfort and elegance. Delight in the peaceful ambiance, embracing a truly exclusive living experience.



# STRATEGIC PLANNING

—

😊 Spacious villas with classy interiors

☀️ Eco-friendly design

🏠 Branded internal fitments





## RIDE WITH PRIDE

---

Enjoy a leisurely boat ride in the Solshi River at when Water is available as the exclusive, private Boating



## A 360-DEGREE VISUAL TREAT

---

Climb up the fanciful view Gallery to enjoy sweeping views of the surrounding landscape & flowing river.



# CULTIVATING WEALTH THROUGH AGRICULTURE

---

As part of our unique offering, select villa owners will be granted an exclusive parcel of fertile farmland near the project site. This land will be dedicated to cultivating a variety of crops, including strawberries, vegetables, and other profitable harvests.

The responsibility of tending to and managing the farm lies entirely with the company, and the resulting profits will be shared generously with the proud owners. An irresistible opportunity, isn't it?





# CRAFTED FOR PLEASURE

---

Experience perpetual enjoyment at RutuGandh Tapola. Whether it's recreation, wellness, or leisure, our meticulously chosen lifestyle amenities guarantee an exhilarating experience every time, making each moment as thrilling as the first.



Indoor Game Hall



Outdoor Game Area



Children play areas



Party Lawn



Ashtavinayak Mandir



View Gallary



Landscaped Out door Sitting Places



Illuminated asphalt roads



Security staff with CC vigilance



Electrical Power supply with Generator back-up

# SPECIFICATIONS

## STRUCTURE

- R.C.C. frame structure
- Earthquake resistant R.C.C. design as per I.S. norms
- Sloping roof slab cladded with precoated branded sheets

## WALLS & FINISHES

- 8" th Jambha Stone Walls
- Putty finish to inner surface of the wall with Acrylic matt finish paint
- Externally antifungal acrylic paint with attractive colour scheme

## FLOORING

- Vitrified flooring for all rooms.
- Ceramic anti-skid flooring to Toilets, Terrace, & Balcony
- Designer dado up to full height for Toilets

## TOILETS

- Concealed plumbing
- Branded sanitary ware
- Jacuzzi Bath in Master Bed Toilet

## Doors

- Attractive Main Entrance Door
- Internally, all door shutters are FRP doors
- Waterproof door in all Toilets

## WINDOWS

- Marble window sills & jambs
- M.S. Powder coated galvanized steel sheets with mosquito net screen panel window with M.S. grill

## ELECTRICAL

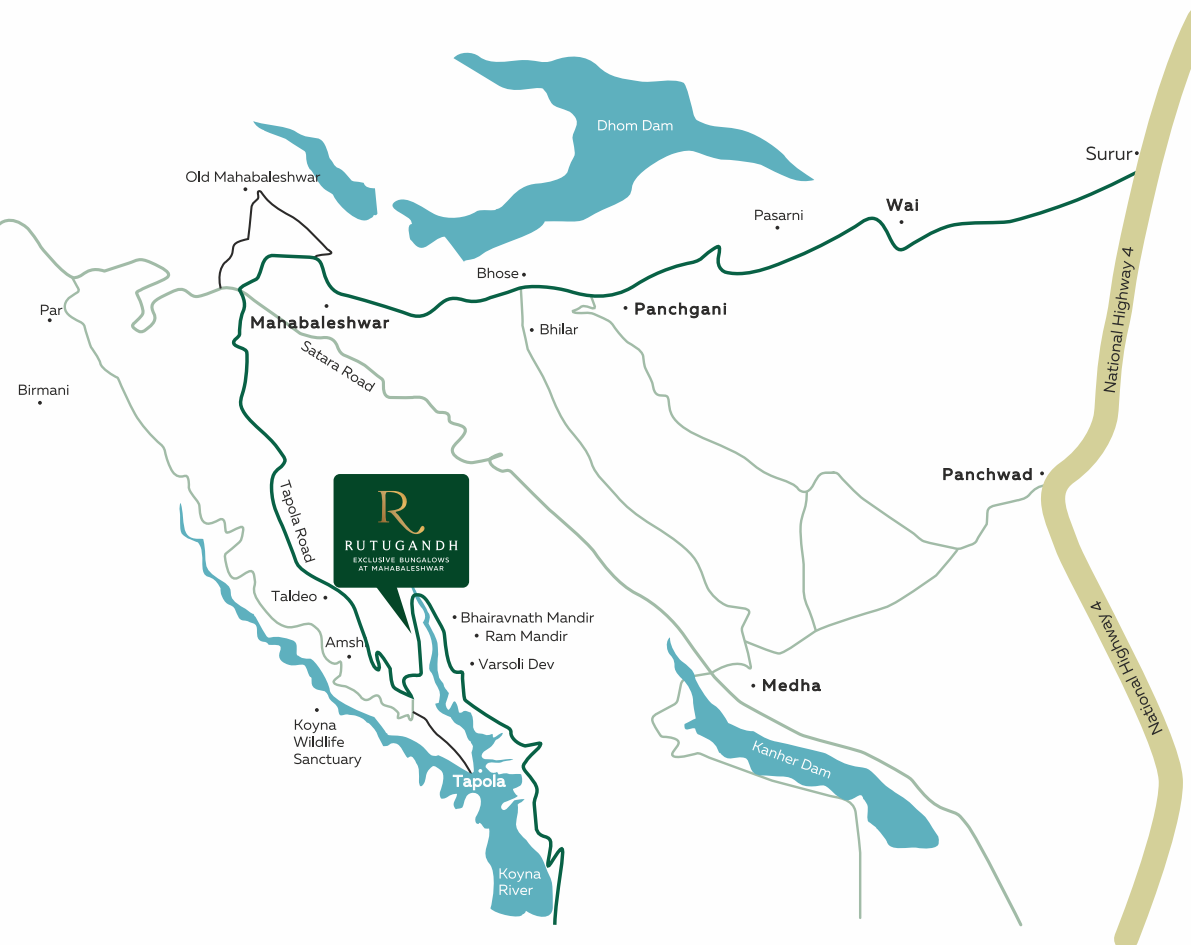
- Branded, fire retardant, concealed electrical wiring
- Modular sockets & switches of reputed brand

## Others

- Stainless steel railing.
- Electrical power supply with generator backup
- Good quality Paving in garden & car park
- Individual landscape & hardscaped gardens
- Each unit will have compound wall with grille & high decorative railing with MS gate.
- cars & vehicle parking facility to Each Unit
- Secured door locking system (Gate & Main doors)



## LOCATION MAP



- Mahabaleshwar - 25 km
- KAAS Natural Flower Valley, "World Heritage Field" - 41 km
- Tapola Lake - 5 km
- Pune - 135 km
- Mumbai - 265 km

Co-Ordinates: 17°-48'-45"N, 73°-43'-28"E



SCAN FOR LOCATION

Project By



Site Address : S. No. 104, Village Gogave & S. No. 37, Village Khambil-Chorge,  
Taluka Mahabaleshwar, District Satara 412806

Pune Corporate Office : Hi-Tek Vyas Developers LLP, RutuGandh Business Center,  
Abhinandan Plaza, 5th Floor, Above Sukanta Dining Hall, Deccan Gymkhana, Pune 411001  
Mob.: +91 99215 00206

Mumbai Branch Office : Hi-Tek Vyas Developers LLP, Building No. 49, Opp. M.I.G. Club,  
Near Mhada Office, Gandhi Nagar, Bandra East, Mumbai 400051  
Phone: +022-26420575

Email ID: hitekvyasdevelopers@gmail.com  
Website: www.hitekvyasdevelopers.com



MahaRERA Registration No.:  
P52700023105, P52400023106, P52700023251 | <http://maharera.mahaonline.gov.in>